

SEE DETAIL "A"
SHEET C3

SEE DETAIL "B"
SHEET C4

CONSTRUCTION NOTES

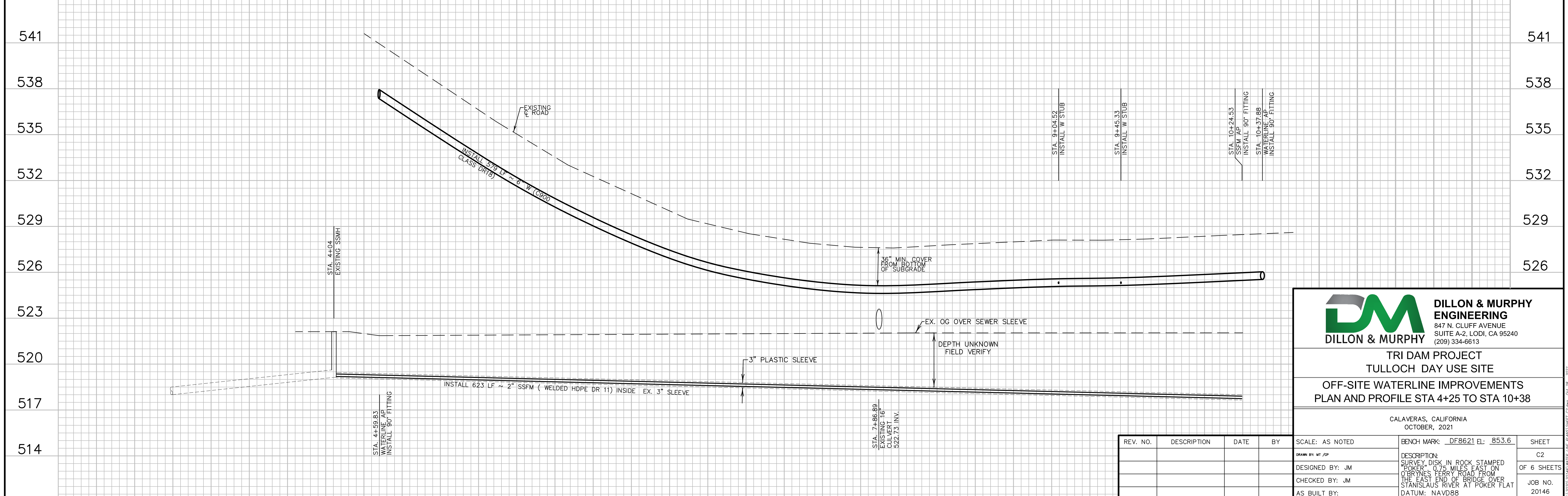
- ① INSTALL 623 LF ~ 2" WELDED HDPE DR 11, INSIDE EXISTING 3" SEWER LATERAL PER AWWA C906 SPECIFICATIONS.
- ② INSTALL WATER MAIN PER CALAVERAS COUNTY WATER DISTRICT STANDARDS W01. SEE SHEET 5.

**O'BYRNES FERRY ROAD
STA. 4+25.18 TO STA. 10+37.88**

SCALE:
HORIZ: 1" = 30'
VERT: 1" = 3'



3+00 4+00 5+00 6+00 7+00 8+00 9+00 10+00 11+00 12+00



DM DILLON & MURPHY ENGINEERING
847 N. CLUFF AVENUE
SUITE A-2, LODI, CA 95240
(209) 334-6613

**TRI DAM PROJECT
TULLOCH DAY USE SITE
OFF-SITE WATERLINE IMPROVEMENTS
PLAN AND PROFILE STA 4+25 TO STA 10+38**

CALAVERAS, CALIFORNIA
OCTOBER, 2021

REV. NO.	DESCRIPTION	DATE	BY

SCALE: AS NOTED	BENCH MARK: DF8621 EL: 853.6	SHEET
DRAWN BY: MT /JP	DESCRIPTION: SURVEY DISK IN ROCK STAMPED POKER, 0.75 MILES EAST ON O'BYRNES FERRY ROAD FROM THE EAST END OF BRIDGE OVER STANISLAUS RIVER AT POKER FLAT	OF 6 SHEETS
DESIGNED BY: JM	DATUM: NAVD88	JOB NO. 20146
CHECKED BY: JM		
AS BUILT BY:		

S:\2020\20146\DWG\20146-02.dwg 08/28/2021